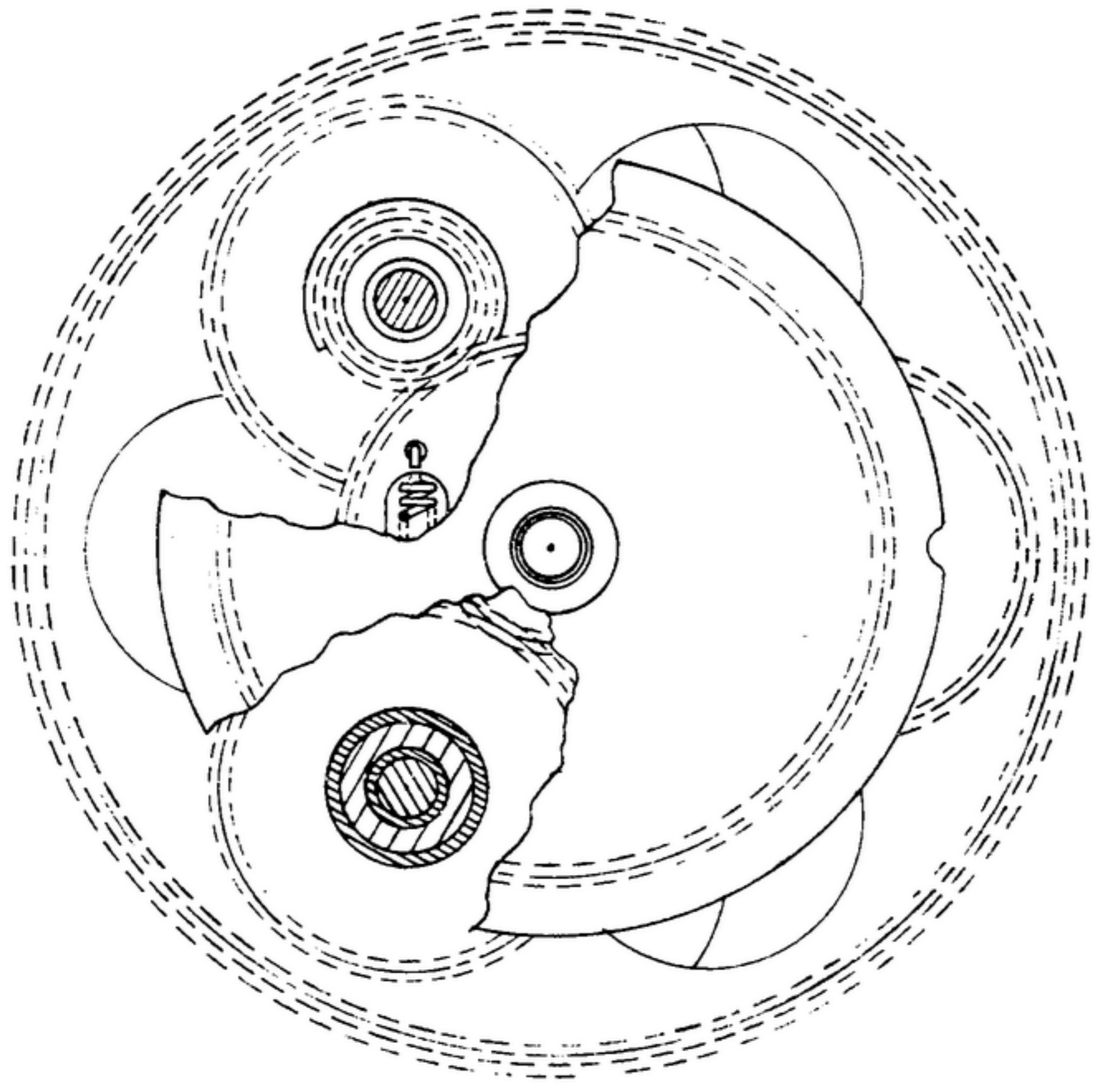


R.F.T. 1.B

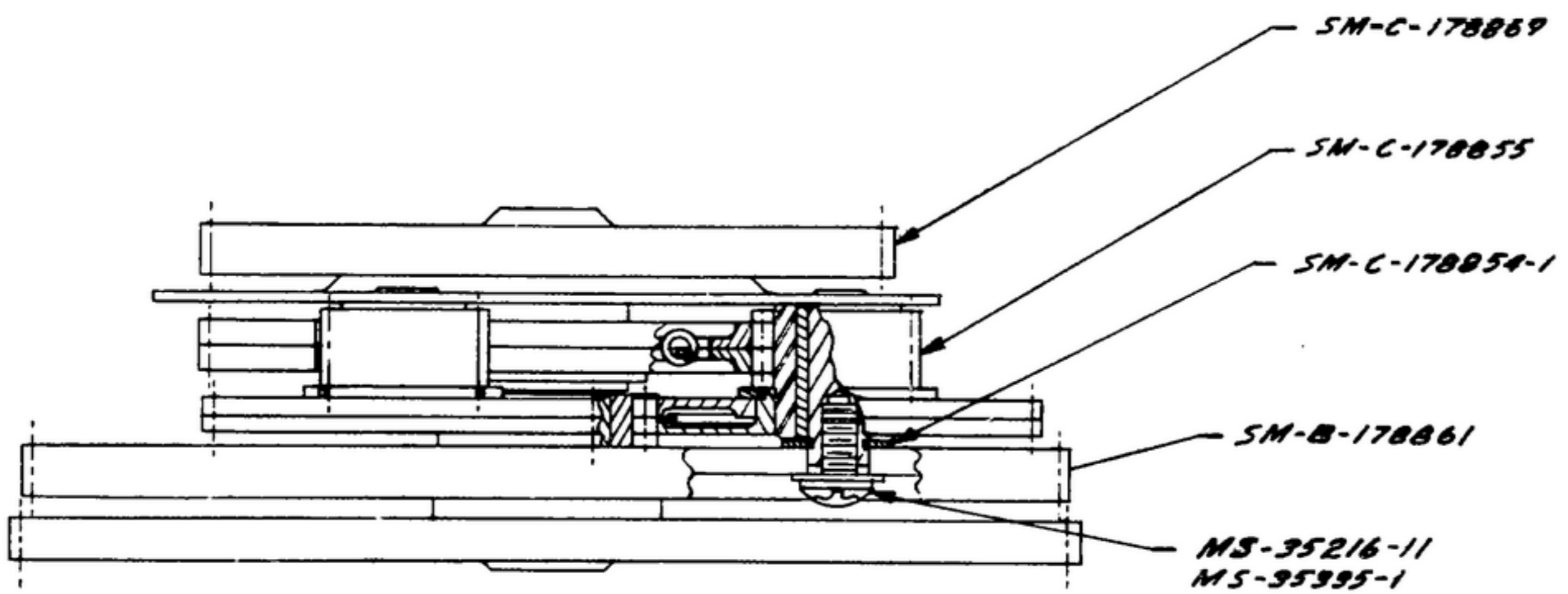
506 2029 003 R-391

NOTICE: WHEN GOVERNMENT DRAWINGS, SPECIFICATIONS, OR OTHER DATA ARE USED FOR ANY PURPOSE OTHER THAN IN CONNECTION WITH A DEFINITELY RELATED GOVERNMENT PROCUREMENT OPERATION, THE UNITED STATES GOVERNMENT THEREBY INCURS NO RESPONSIBILITY FOR ANY OMISSION, UNAUTHORIZED USE, OR THE FACT THAT THE GOVERNMENT MAY HAVE FORMULATED, FURNISHED, OR IN ANY WAY SUPPLIED THE SAID DRAWINGS, SPECIFICATIONS, OR OTHER DATA IS NOT TO BE REGARDED BY IMPLICATION OR OTHERWISE AS IN ANY MANNER LICENSING THE HOLDER OR ANY OTHER PERSON OR CORPORATION, OR CONVEYING ANY RIGHTS OR PERMISSION TO REPRODUCE, USE, OR SELL ANY PATENTED INVENTION THAT MAY IN ANY WAY BE RELATED THERETO.

REVISIONS			
SYM	DESCRIPTION	DATE	APPROVAL



- 1- SUPPLIED BY WALDEE KON-I-NOOR, LONG ISLAND CITY, N.Y. OR EQUAL.
- 2- PLACE SM-C-178855 ON PIN OF SM-C-178869 ROTATING SPLIT GEAR LOADING SPRING TO MAX POSITION BEFORE MESHING WITH MATING GEAR & SECURE WITH RING #5199-1B.
- 3- ROTATE TO MAX. POSITION 3 SPLIT GEAR LOADING SPRINGS & MESH.
- 4- RING #5199-1B TO BE INSTALLED WITH BURR SIDE AWAY FROM SM-C-178855.
- 5- COMPLETED ASSY. TO BE MOUNTED ON CENTER LINE OF 1865 DIA. SHAFT.
- 6- LUBRICATE ALL BEARINGS WITH AN-069 OIL, MIL-L-7870.



QTY	PART NO.	DESCRIPTION	MATL	MATL SPEC	NOTE
1	MS-35335-1	WASHER			
1	MS-35216-11	SCREW			
3	SM-C-178854-1	RING #5199-1B			1
1	SM-C-178869	GEAR ASSY			
1	SM-B-178861	GEAR ASSY			
3	SM-C-178855	GEAR ASSY			

LIST OF MATERIAL

UNLESS OTHERWISE SPECIFIED		AUTHENTICATION		<h2>GEAR ASSY</h2>	SIGNAL CORPS ENGINEERING LABORATORIES  FORT MONMOUTH    NEW JERSEY  <h3>SM-C-178854</h3>
DIMENSIONS ARE IN INCHES		DRAWN BY	PH-53		
TOLERANCES ON		TRACED	PHOTO		
FRACTIONS    DECIMALS    ANGLES		CHECKED	[Signature]		
		VERIFIED	P.D.B.R.		
		APPROVED	P.D.B.R.		
		REVIEWED	P.M.E.		
NEXT ASSY    USED ON		DATE	4-AUG-53	SCALE	2/1
APPLICATION					